

PROPERTY

# Sophistication and TRANQUILLITY

A MODERN HOME IDEAL  
FOR TODAY'S LIFESTYLE

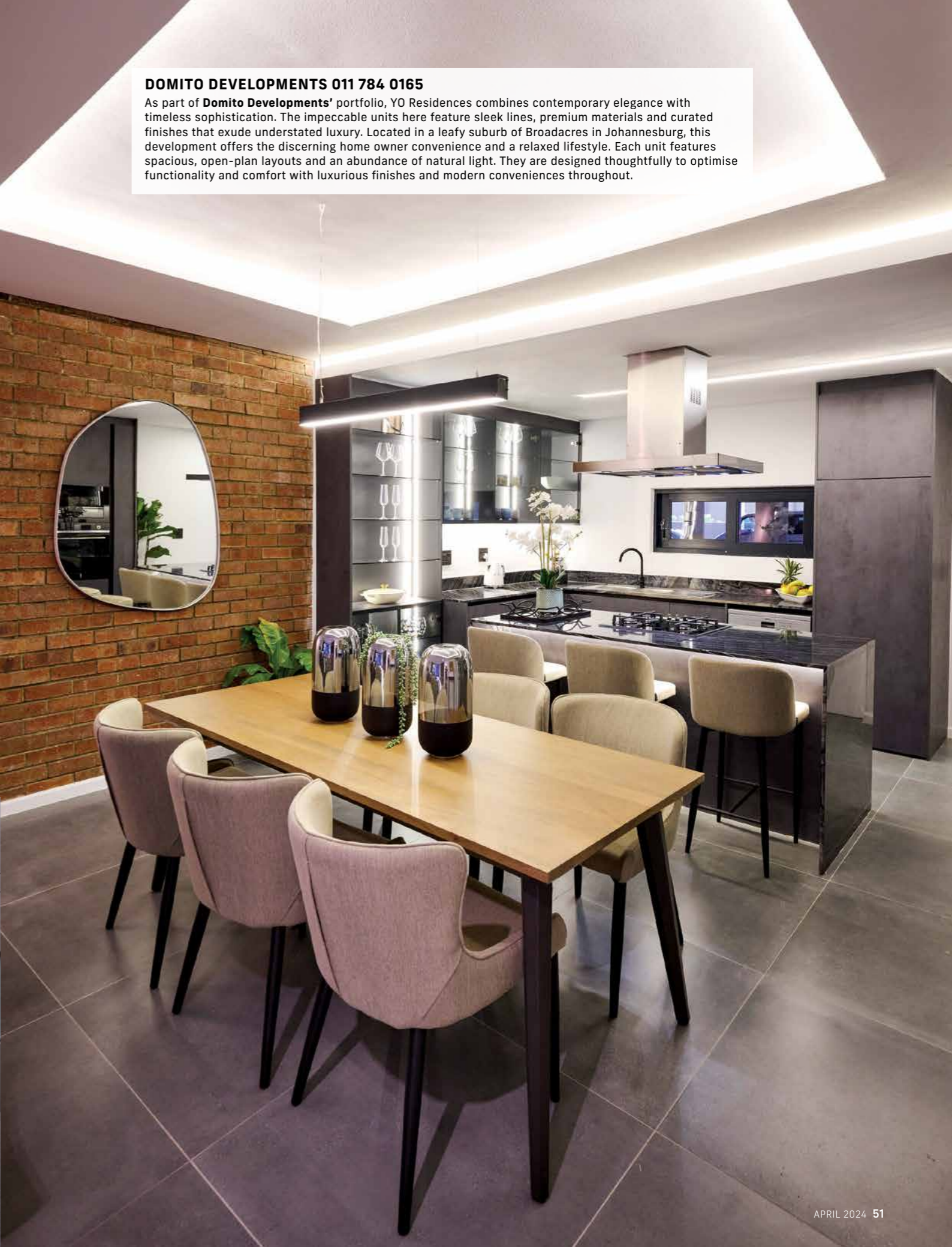


BY TRISHA HARINATH • PROJECT CONSULTANT IONA O'REILLY  
PROPERTY COORDINATOR NOSIPHO KWEYAMA • PHOTOGRAPHER NIC BALETA



**DOMITO DEVELOPMENTS 011 784 0165**

As part of **Domito Developments'** portfolio, YO Residences combines contemporary elegance with timeless sophistication. The impeccable units here feature sleek lines, premium materials and curated finishes that exude understated luxury. Located in a leafy suburb of Broadacres in Johannesburg, this development offers the discerning home owner convenience and a relaxed lifestyle. Each unit features spacious, open-plan layouts and an abundance of natural light. They are designed thoughtfully to optimise functionality and comfort with luxurious finishes and modern conveniences throughout.



**S**ituated in a leafy and easily accessible suburb in Johannesburg North, YO Residences is the brainchild of Domito Developments. With phase two now complete, this show unit offers potential buyers a chance to visualise what living in this lifestyle estate will be like. According to the developers, the design was inspired by modern luxury living and combines elements of

natural aesthetics to create a harmonious blend of sophistication and tranquillity. All units have been designed spaciously so that there is an airy feeling throughout while upmarket finishes and modern conveniences enhance the lifestyle for the discerning resident.

Steel cladding, structural I-beams and large glass facades offer a contemporary aesthetic, while the use of red face brick lends itself to a timeless design. >





TT STONE 066 022 0352



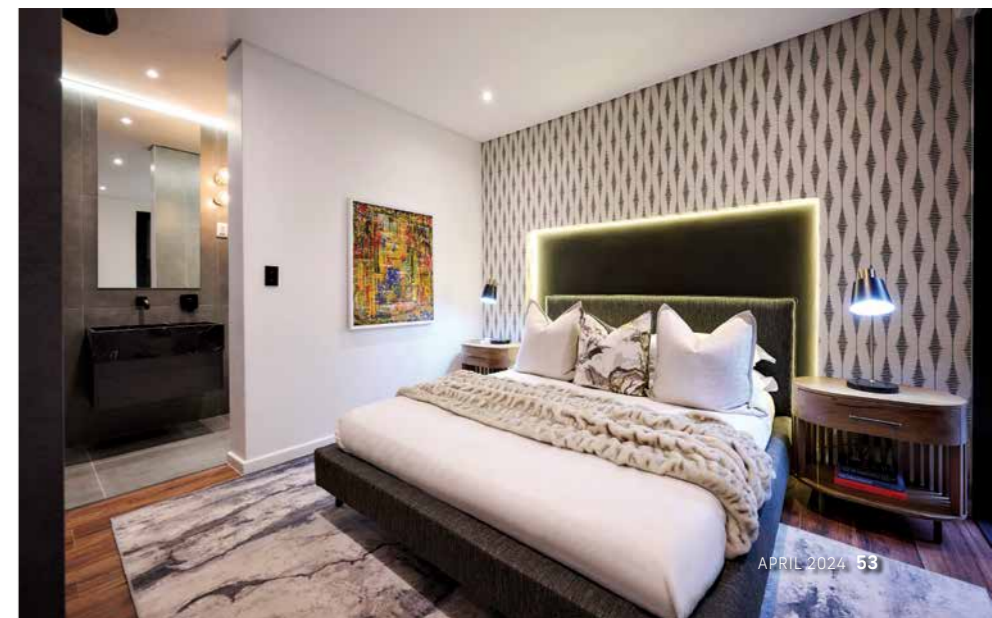
LAVISH SPACES 083 630 7677

**ABOVE:** Specialising in composite stone sanitaryware, **TT Stone** provided the high-quality, long-lasting and aesthetically pleasing Octavo and Ovale bathtubs in this home in custom colours. The matt finish in black, grey and white has resulted in a product that is timeless in its looks and backed by durability due to the high-quality materials used. **TT Stone's** products are engineered specifically to be beautiful, practical and last a lifetime, and they are hygienic and easy to maintain as well. Based in Pretoria, the company services both the local and export markets with excellence.

This juxtaposition of materials is just one of many standout features of the development. The backbone of the design is the concrete and structural steel – the steel, which is part of the architect's design intent, frames the clerestory light and view. Other distinct features include bespoke architectural detailing, expansive floor-to-ceiling windows for panoramic views, marble kitchen countertops and bathroom vanities, meticulously landscaped gardens, a state-of-the-art fitness centre and a seamless integration of indoor and outdoor living spaces.

The show unit allows prospective buyers the opportunity to see how the homes can be decorated and furnished. Here, there is a seamless combination of contemporary elegance with timeless sophistication where sleek lines, premium materials and curated furnishings exude subtle luxury. Although each space has the potential to become a favourite of future residents, one area that stands out in this unit is the expansive balcony that provides >

**ABOVE RIGHT:** The brief to **Lavish Spaces** was to turn a vacant premier property into an elegant and liveable space. A neutral colour palette with subtle patterns was used to create a minimalist, trendy look. Textured fabrics, specifically the bouclé used on the living room couch and occasional chairs, were added for visual interest. The look was finished off by adding colourful abstract artworks by a South African artist to enhance the sense of warmth, while greenery was used to liven up the space.





ELEGANT BATHROOM AND SHOWER DESIGN 079 838 9790



**ABOVE:** The elegant frameless shower offers excellent functionality and convenience. It was manufactured by **Elegant Bathroom and Shower Design**, a company specialising in custom-made frameless showers, steam rooms, saunas, balustrading, folding and stacking patio doors, mirrors and all other bathroom requirements. The company also manufactured and supplied the glass shelving and cabinet doors for the kitchen.

an idyllic setting for relaxation, entertaining and enjoying the outdoors in total privacy and ultimate comfort. The development also offers residents numerous benefits, including access to exclusive amenities, a vibrant community atmosphere, proximity to upmarket shopping and dining destinations and the peace of mind that comes with living in an exceptionally maintained environment with 24/7 security. 🏡

#### CONTACTS:

**DOMITO DEVELOPMENTS** – property developers,  
011 784 0165, sales@domitodevelopments.co.za,  
www.domitodevelopments.co.za

**ELEGANT BATHROOM AND SHOWER DESIGN** – custom shower design,  
011 791 2526, 079 838 9790, 064 496 1729

**LAVISH SPACES** – residential and commercial interior designer,  
083 630 7677, hello@senzi.co.za, www.senzi.co.za

**NICO VAN DER MEULEN ARCHITECTS** – architecture and interior design,  
011 789 5242, marketing@nicovdmeulen.com, www.nicovdmeulen.com

**TT Stone** – composite stone sanitaryware,  
066 022 0352, info@twotonestone.co.za, www.twotonestone.co.za

